

MINUTE TRACTORS TX

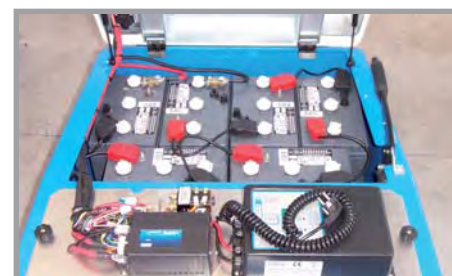


fiorentini

The Fiorentini logo consists of the brand name 'fiorentini' in a stylized, italicized font. Below the text is a graphic of a globe, rendered in shades of blue and white, representing the company's international presence.

MINUTE TRACTORS TX

TECHNICAL DATES		TX05	TX020	TX025	TX035	TX040
Mechanical drive (front/rear)		rear	rear	rear	rear	rear
Forward speed	km/h	8	12	12	12	12
Max. slope (without load)	%	10	10	10	12	14
Operating range of empty machine	h	10	5.5	7.5	6.5	5.5
Service brake		mechanical pedal	hydraulic pedal	hydraulic pedal	hydraulic pedal	hydraulic pedal
Parking brake		lever	lever	lever	lever	lever
Towage weight on flat ground	Kg	500	2000	2000	3000	4000
Turning radius	mm	1200	1650	1750	1750	1750
ELETTRIC DATES						
Power	v	24	24	36	36	36
Traction motor	w	24v 0.7kw 2500rpm	36v 2kw 2400rpm	36v 2kw 2400rpm	36v 3.2kw 2400rpm	36v 4kw 2400rpm
Voltage	(Ah in C20)	2x12v 330Amp	4x6v 330Amp	6x6v 330Amp	6x6v 330Amp	6x6v 330Amp
DIMENSION & WEIGHT						
Lenght	mm	1280	1640	1730	1730	1730
Width	mm	702	875	875	875	875
Height	mm	1005	1110	1110	1110	1110
Number/diameter wheels	mm	3x300	3x400	3x400	3x400	3x400
Weight of the machine	kg	106	296	354	354	354



Distributed by:

Industrial Cleaning Machines

ICM House,
Showell Road, Bushbury,
Wolverhampton
WV10 9LN Tel:01902 306039

